

**Description**

20310 is precision universal type Load Cell useful in hanging type weighing, universal testing, process & machine automation and line tension measurement. It is constructed from high tensile tools steel for ruggedness and harsh industrial applications. It's design is strain gage based with full temperature compensation over 0 to 60°C range.

**Features**

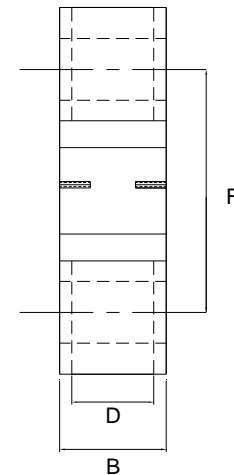
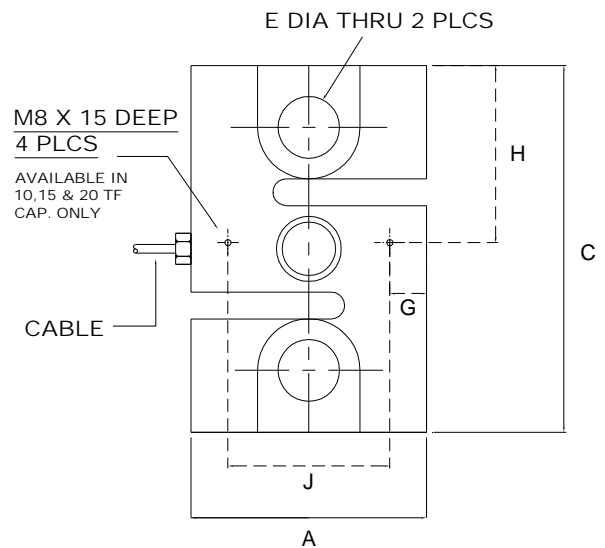
- ❖ 1.5, 2, 3, 5, 7.5, 10, 15, 20 TF. Capacities available.
- ❖ High Alloy Tool Steel construction for resistance against shock and overload.
- ❖ Complete Environmental Protection -IP68 class- Laser Welded is available optionally.
- ❖ Standardized output (3.0 ± 0.25%) available on request.
- ❖ Can be customized to suit customer's requirements.
- ❖ High Temperature version can be provided on request.

**Applications**

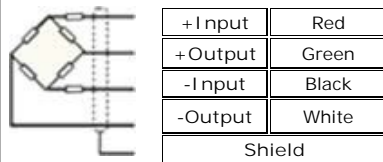
- ❖ Conversion of Mechanical Scale to Electronic.
- ❖ Tank, Hopper & Bag Weighing.
- ❖ Force Measurement, Tension & or Compression Dynamometer.
- ❖ Hanging & Crane Scale.
- ❖ Industrial Automation.
- ❖ Line tension measurement.
- ❖ Process & machine automations.
- ❖ Robotics.

**Performance Specification**

Standard Capacities	1.5, 2, 3, 5, 7.5, 10, 15, 20 TF.
Excitation Voltage	10 VDC- Maximum 15 VDC
Nominal Output	3.0 m V/ V
Non - Linearity	< ±0.025% FSO
Hysteresis	< ±0.02% FSO
Non-Repeatability	< ±0.01% FSO
Creep (30 minutes)	< ±0.03% FSO
Zero Balance	±1.0% FSO
Input Resistance	392 ± 15 Ohms
Output Resistance	350 ± 3 Ohms
Insulation Resistance (50 VDC)	> 1000 Mega Ohms
Cable Length (4 Core Screened)	Please See table
Safe Overload of Rated Capacity	150%
Ultimate Overload of Rated Capacity	250%
Allowable Side Load	50%
Temp. Compensated Range	0-60 °C
Temperature Effect on Output	< 0.0015% FSO/ °C
Temperature Effect on Zero	< 0.0020% FSO/ °C
Deflection	< 0.4 mm at FSO
Finish & Construction	Electroless Nickel Plated Tool Steel
Environmental Protection Class	IP 67 IP68 – Laser Welded (Optional)



**Electrical Termination**



CAPACITY – TF.	A	B	C	D	E (Dia)	F	G	H	J	CABLE-MTR.
1.5, 2,3	75	27	100	27	13	75	--	---	--	5
5,7.5	90	32	140	32	20	100	--	---	--	10
10	115	45	200	40	30	140	18.5	89	78	20
15,20	150	65	250	60	46	175	25	116	100	20

NOTE: ALL DIMENSIONS ARE IN MM



**ADI ARTECH TRANSducers (P) LTD, VADODARA**

A Joint venture with ARTECH INDUSTRIES INC., U.S.A  
917/1, G.I.D.C. Estate, Makarpura Vadodara - 390 010. Gujarat, India.

**Ph: +91 265 2655083, 2651023 Fax: +91 265 2638751**

**Email: sales@adiartech.com Website: www.adiartech.com**