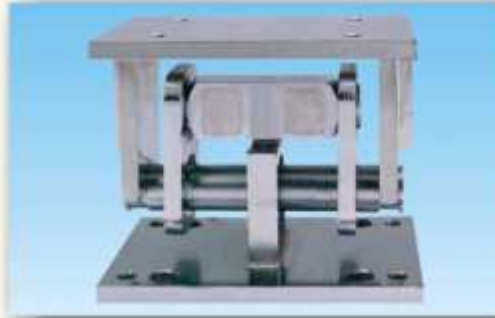

model
WM-III



FEATURES :

- ❖ 10 Tf to 100Tf Capacities
- ❖ Available Using Forged Links or ADI Artech's High Strength Machined Links.
- ❖ Mild Steel Zinc Plated Construction.
- ❖ WM-III Used with 80210 Load Cell.

APPLICATIONS :

- ❖ Truck Scale
- ❖ Track Scale
- ❖ Railroad Scale
- ❖ Axle Scale

DESCRIPTION :

The WM-III Weighing Module is designed to utilize double ended shear beam Load Cell-80210 for Track/Track weighing. The weigh module is available in mild steel. Loading links are available in forge links up to 30 Tf capacities. But for large capacities ADI Artech's machined links are highly recommended. It is made out of the same alloy steel as the load cell and treated the same as the load cell. Thus minimizing the wear & tear on the load cell and maximizing the final strength. This center supported, double, ended shear beam mount with parallel link suspension allows movement in all horizontal plane directions while minimizing non-axial load applied to the load cell. It is self-restoring to its center position. This eliminates check rods and only platform bumper bolts or plates are required.

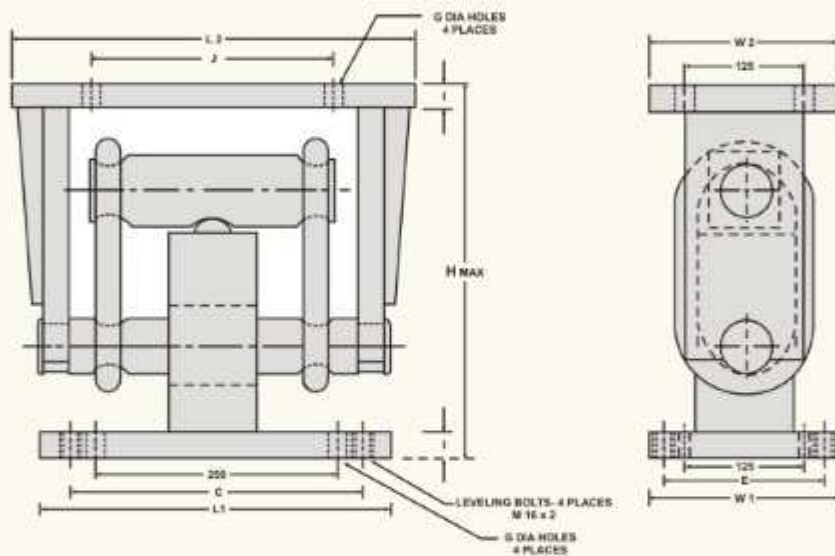


ADI ARTECH
TRANSDUCERS PVT. LTD.

A Joint venture with
ARTECH INDUSTRIES INC., U.S.A.

CAPACITY	C	E	L1	W1	L2	W2	H MAX	G DIA	I	J
10 to 45 Tt	356	165	390	200	450	200	340	18	25	250
75 to 100 Tt	356	165	390	200	520	200	450	22	32	280

All dimensions are in mm.



ORDER INFORMATION :

ADI ARTECH is dedicated in maintaining adequate inventories of its Load Cells to provide the best service in the industry.

Order by the model number and indicate the capacity required.

Specifications are subject to change without notice



Manufactured by :

ADI ARTECH
TRANSDUCERS PVT. LTD.

A Joint venture with ARTECH INDUSTRIES INC., U.S.A.

917/1, G.L.D.C. ESTATE, MAKARPURA,
BARODA - 390 010 (INDIA)
Phone : 2635983/2631023
FAX : (91) 0265-263751
E-mail : sales@adiartech.com
artechad1@sancharnet.in
Website : www.adiartech.com

QUALITY * PERFORMANCE * SERVICE
"A PREFERRED NAME IN LOAD CELL TECHNOLOGY"

Doc No. WMH