

Description

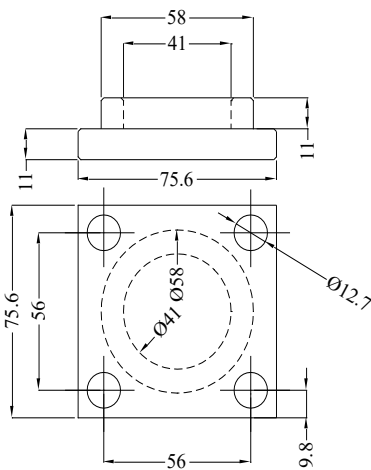
The WM-VIII-Weighing Module is designed to utilize Single Column compression type Load Cell Model 90410 for Weigh Bridge, Tank and Hopper weighing. The module is available in Zinc plated mild steel. Loading of the cell is through top and bottom mounting buttons. Top & bottom buttons are provided with four fixing holes to fit to weigh bridge frame and the base. Base button is provided with the slot for anti rotation of the cell. It is self-centering and low profile module suitable for medium capacity applications. Check rods are not necessary for static loads. Weigh Bridge, Tank and Hopper require bumpers from all four sides for balancing.

Features

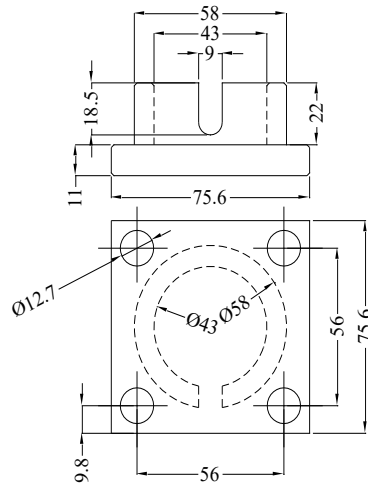
- 10tf to 60tf.
- Mild steel zinc plated construction.
- Bolts directly to the weigh bridge, tank or hopper legs and floor.
- Anti rotation mechanism is provided.

Applications

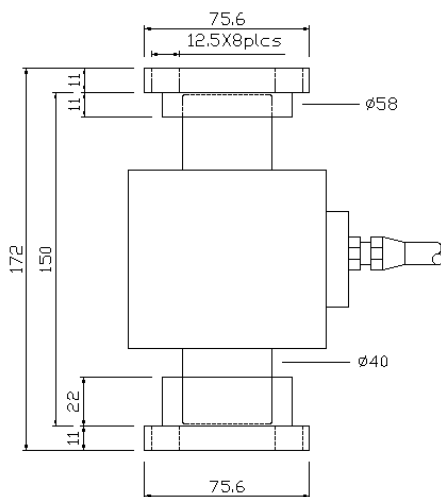
- Tank Weighing.
- Hopper Weighing.
- Weigh Bridge.
- Tensile Testing.



WM-IV-TOP PART



WM-IV-BASE PART



Specifications are subject to change.

All dimensions are in mm.



Made in INDIA by:

ADI ARTECH
TRANSDUCERS PVT. LTD.

A Joint venture with
ARTECH INDUSTRIES INC., U.S.A

917/1, G.I.D.C. Estate, Makarpura, Vadodara - 390 010, Gujarat, INDIA

Mobile : +91-9374068998, 9879444551, 9054467370

Email : sales@adiartech.com, adiartech@adiartech.com

Website : www.adiartech.com