

Description

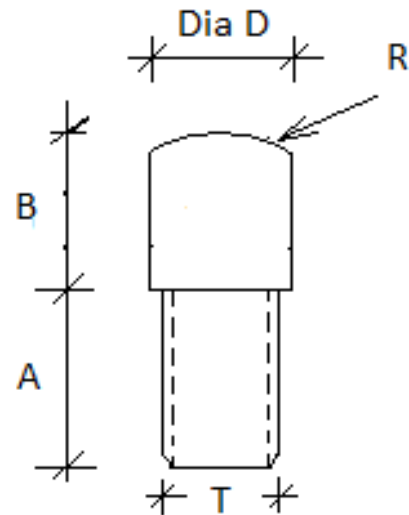
The WM-X Weighing Module is designed to utilize 90610-T Load Cell for tank, hopper weighing, tensile testing and UTM. The module is available in hardened tool steel.
Loading of the cell is through a spherical bolt head fitted to the cell's threads firmly.
Its dimensions can be customized to fit to customers' requirements.

Features

- 1Tf to 450 Tf.
- Tool steel electro less nickel plated construction.
- Available in stainless steel on request.

Applications

- Tank Weighing.
- Hopper Weighing.
- Platform Weighing.
- Tensile Testing



Load(Tf.)	A	B	Dia. D	Radius R	Thread T
1	23	10	15	150	12X1.25
1	10	8	15	FLAT	12X1.25
3	17	10	30	FLAT	20X1.5
5	28	15	20	150	16 X 1.5
15	38	25	40	150	30 X 2
30	48	35	60	150	39 X 2
50	58	40	90	150	42 X 2
100	88	70	120	430	72 X 2
150	98	85	135	430	90 X 3
300	128	95	190	430	120 X 4
450	158	120	240	430	150 X 4

Specifications are subject to change.

All dimensions are in mm.

	Made in INDIA by: ADI ARTECH TRANSDUCERS PVT. LTD.	917/1, G.I.D.C. Estate, Makarpura, Vadodara - 390 010, Gujarat, INDIA Mobile : +91-9374068998, 9879444551, 9054467370 Email : sales@adiartech.com, adiartech@adiartech.com Website : www.adiartech.com
	All dimensions are in mm.	