

**MODEL****WM – XII WEIGH MODULE FOR 70610 LOAD CELL****Description**

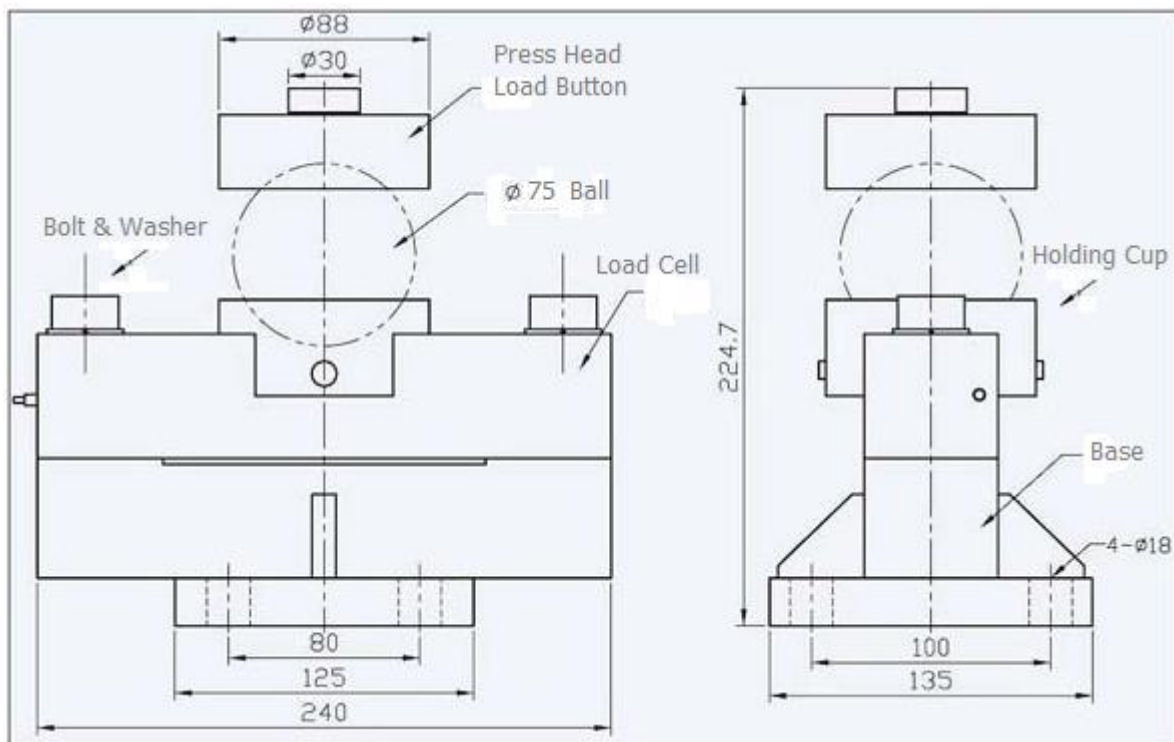
The WM-XII-Weighing Module is designed to utilize Double ended shear beam type Load Cell Model 70610 for Weigh Bridge, Tank and Hopper weighing. The module is available in mild steel. Loading of the cell is through top mounting button. Base is provided with four holes for fixing to the base. It is self-centering and low profile module suitable for medium capacity applications. Check rods are not necessary for static loads. Weigh Bridge, Tank and Hopper require bumpers from all four sides for balancing.

**Features**

- 10tf to 40tf.
- Mild steel painted and plated construction.
- Fits directly to the weigh bridge, tank or hopper legs and floor.

**Applications**

- Tank Weighing.
- Hopper Weighing.
- Weigh Bridge.



Note-Load Cell shown is for illustration purpose only. It is sold separately.

Specification are subject to change.

All dimensions are in mm.



Made in INDIA by:

**ADI ARTECH**  
**TRANSDUCERS PVT. LTD.**

A Joint venture with  
ARTECH INDUSTRIES INC., U.S.A

917/1, G.I.D.C. Estate, Makarpura, Vadodara - 390 010, Gujarat, INDIA

**Mobile** : +91-9374068998, 9879444551, 9054467370

**Email** : sales@adiartech.com, adiartech@adiartech.com

**Website** : www.adiartech.com