

Description

20310-HS is Hermetically sealed and **CE Certified** Precision Tension type Load Cell useful in Hanging type Weighing, Compressive & Tensile Testing, Process & Machine Automation and Line Tension Measurement. It is constructed from high tensile tools steel for ruggedness and harsh industrial applications. It is strain gage based Load Cell with full temperature compensation over 10 to 50°C range.

Features

- ❖ 1.5, 2, 3, 5, 7.5, 10, 15, 20 TF. Capacities available. ❖ **CE Rated**
- ❖ High Alloy Tool Steel construction for resistance against shock and overload.
- ❖ Complete Environmental Protection -IP68 class- Laser Welded is available optionally.
- ❖ Standardized output (3.0 ± 0.25%) available on request.
- ❖ Can be customized to suit customer's requirements.
- ❖ High Temperature version can be provided on request.

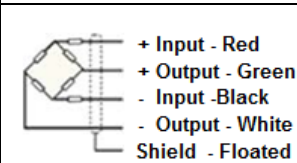
Applications

- ❖ Conversion of Mechanical Scale to Electronic.
- ❖ Tank, Hopper & Bag Weighing.
- ❖ Force Measurement, Tension & or Compression Dynamometer.
- ❖ Hanging & Crane Scale.
- ❖ Industrial Automation.
- ❖ Line tension measurement.
- ❖ Process & machine automations.
- ❖ Robotics.

Performance Specification

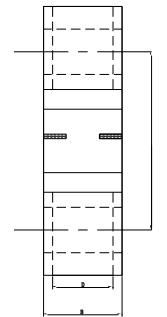
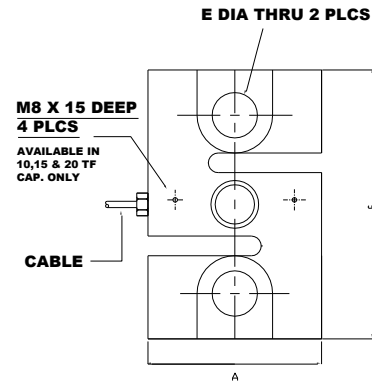
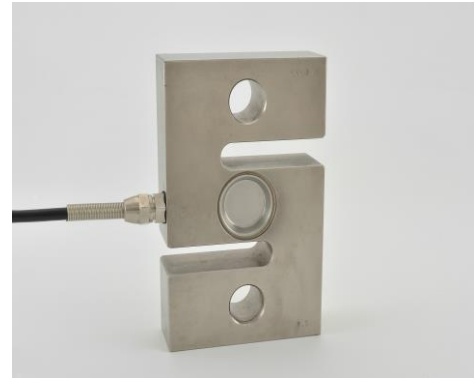
Standard Capacities	1.5, 2, 3, 5, 7.5,10, 15, 20 TF.
Excitation Voltage	10 VDC- Maximum 15 VDC
Nominal Output	3.0 m V/ V
Non - Linearity	< ±0.025% FSO
Hysteresis	< ±0.02% FSO
Non-Repeatability	< ±0.01% FSO
Creep (30 minutes)	< ±0.03% FSO
Zero Balance	±1.0% FSO
Input Resistance	392 ± 15 Ohms
Output Resistance	350 ± 3 Ohms
Insulation Resistance (50 VDC)	> 1000 Mega Ohms
Cable Length (4 Core Screened)	5 Meters
Safe Overload of Rated Capacity	150%
Ultimate Overload of Rated Capacity	250%
Allowable Side Load	50%
Temp. Compensated Range	10-50 °C
Temperature Effect on Output	< 0.0015% FSO/ °C
Temperature Effect on Zero	< 0.0020% FSO/ °C
Deflection	< 0.4 mm at FSO
Finish & Construction	Electro less Nickel Plated Tool Steel
Environmental Protection Class	IP 67

Electrical Termination



Options

- *Supportive Hardware such as : Shackles
- *Compatible Instruments with Relay output, 4-20 mA or 0-2 Volt Output
- *Digital Version with RS-485 interface / USB output / Blue Tooth Telemetry / Wireless Telemetry
- *Software for Graphic, Tabulation, Analysis and Reporting



Tension Loading

CAPACITY – TF.	A	B	C	D	E (Dia.)	F
1.5, 2,3	75	27	100	27	13	75
5	90	32	140	32	20	100
10	115	45	200	40	30	140
15,20	150	65	250	60	46	175

Specifications are subject to change. All dimensions are in mm.



Made in INDIA by:

ADI ARTECH

TRANSDUCERS PVT. LTD.

(An ISO 9001:2015 Certified Company)

917/1, G.I.D.C. Estate, Makarpura, Vadodara - 390 010, Gujarat, INDIA

Mobile : +91-9374068998, 9879444551, 9054467370

Email : sales@adiartech.com, adiartech@adiartech.com

Website : www.adiartech.com