

Description

90410 is **CE Certified** precision rocker type compression Load cell useful in tank weighing, truck weighing, Hopper weighing. It is constructed from Stainless Steel 17 – 4 PH material for ruggedness and Harsh Industrial applications. It is **Hermetically sealed, Laser welded** to provide IP-68 degree of environmental protection. It is strain gage based with full temperature compensation over 10 to 60°C range. Can be supplied with compatible mounting brackets at an extra cost.

Features

- ❖ **CE Rated** ❖ 10 Tf to 100 Tf capacity
- ❖ Hermetically Sealed Laser welded for complete environmental Protection – IP 68 class.
- ❖ Standard Output 2.00 mV/V
- ❖ Stainless Steel construction
- ❖ Built in lightning protection

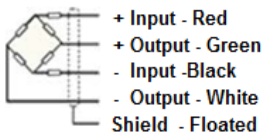
Applications

- ❖ Compression Force Testing
- ❖ Weigh bridge
- ❖ Hydraulic Press
- ❖ Tank, Silo Weighing, Industrial automation
- ❖ Civil & Construction Material Testing.
- ❖ Pile & Structure Testing

Performance Specification

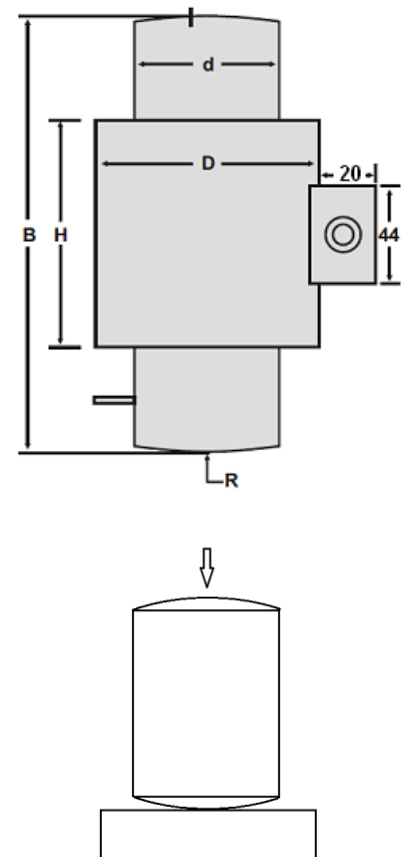
Standard Capacities Tf.	10, 15, 20, 25, 30, 40, 50, 60, 75, 100
Excitation Voltage	10 VDC-Maximum 15VDC
Nominal Output	2.0 mV/V
Non - Linearity	< ± 0.025%FSO (Full Scale Output)
Hysteresis	< ±0.05% FSO
Non-Repeatability	< ±0.02% FSO
Creep (30 minutes)	< ±0.03% FSO
Input Resistance	770 ± 5.0 Ohms
Output Resistance	700 ± 3.0 Ohms
Insulation Resistance (50V)	>1000 Mega Ohms at 50 VDC
Safe Overload	150%
Ultimate Overload of Rated	300%
Temp. Compensated Range	10-60 °C
Temperature Effect on Output	< 0.0015% FSO/ °C
Temperature Effect on Zero	< 0.0020% FSO/ °C
Deflection	< 0.4 mm at FSO
Material of Construction	Stainless Steel 17 – 4 Ph / Tool Steel
Environmental Protection Class	IP68

Electrical Termination



Options

- * Mounting Module WM-VIII
- * Compatible Instruments with Relay output, 4-20 mA or 0-2 Volt Output
- * Digital Version with RS-485 interface / USB output / Blue Tooth Telemetry / Wireless Telemetry
- * Software for Graphic, Tabulation and Reporting and Analysis



CAPACITY TF	B	R	d	D	H	Cable*
10, 15, 20, 30, 40, 50	150	150	40	90	75	15Mtrs.
60, 75, 100	200	430	70	145	140	15Mtrs.

*4 core screed cable

Specifications are subject to change. All dimensions are in mm.

	<p>Made in INDIA by:</p> <p>ADI ARTECH</p> <p>TRANSDUCERS PVT. LTD.</p> <p>(An ISO 9001:2015 Certified Company)</p>	<p>917/1, G.I.D.C. Estate, Makarpura, Vadodara - 390 010, Gujarat, INDIA</p> <p>Mobile : +91-9374068998, 9879444551, 9054467370</p> <p>Email : sales@adiartech.com, adiartech@adiartech.com</p> <p>Website : www.adiartech.com</p>
	<p>917/1, G.I.D.C. Estate, Makarpura, Vadodara - 390 010, Gujarat, INDIA</p>	