

Description

This is static reaction torque transducer – **CE Certified**, flange mount with female SQ Drive at loading end. It is designed for industrial and research applications. It is constructed from Electro less Ni plated tool steel for harsh industrial applications. TTS-F-SQ-F is strain gage based sensor with full temperature compensation over 10 to 50°C. It is compensated for axial and side loads for very good linearity and low hysteresis. It is very compact and easy to install into the applications. It is available from 0 - 10 NM to 0 - 50KNM capacities to cover wide industrial applications. It is suitable for clock wise and anti-clock wise directions. This sensor can be supplied with factory calibrated instrument with display, computer interface etc.

Features

- ❖ **CE Rated** ❖ Very compact and rugged for heavy duty applications.
- ❖ Compensated for axial and bending moments for good accuracy.
- ❖ Gage area is sealed for IP 65 degree of environmental class.
- ❖ Can be supplied as per customers required size and capacity.
- ❖ Both end shaft or one end shaft and other end flange type also can be supplied

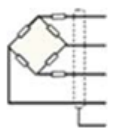
Applications

- ❖ Actuator/valve/electrical tool testing
- ❖ Axle/shaft torsion test
- ❖ Bearing friction measuring
- ❖ Testing of starters/slip rings/brushes/clutches/brakes
- ❖ Electric/hydraulic/pneumatic motors testing
- ❖ Alternators/pumps/gas, diesel, turbine engines testing
- ❖ Automobile testing of drive shaft and crank shaft torque
- ❖ Defense, Aerospace, R&D Establishments, Offshore test rigs, Automotive, Machine tools, Electrical and Engineering Industries.

Performance Specification

Standard Capacities	See table below
Excitation Voltage	10 VDC- Maximum 15 VDC
Nominal Output	2.0 m V/ V
Non - Linearity	< ±0.5% FSO
Hysteresis	< ±0.2% FSO
Non-Repeatability	< ±0.1% FSO
Creep (30 minutes)	< ±0.3% FSO
Zero Balance	±1.0% FSO
Input Resistance	392 ± 15 Ohms
Output Resistance	350 ± 3 Ohms
Insulation Resistance (50 VDC)	> 1000 Mega Ohms
Cable Length (4 Core Screened)	5 Mtrs
Safe Overload of Rated Capacity	150%
mate Overload of Rated Capacity	250%
Allowable Side Load	50%
Temp. Compensated Range	10-50 °C
Temperature Effect on Output	< 0.0015% FSO/ °C
Temperature Effect on Zero	< 0.0020% FSO/ °C
Deflection	< 0.4 mm at FSO
Finish & Construction	Tool Steel / Stainless Steel 17-4 PH
Environmental Protection Class	IP 65

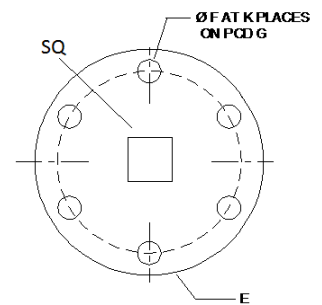
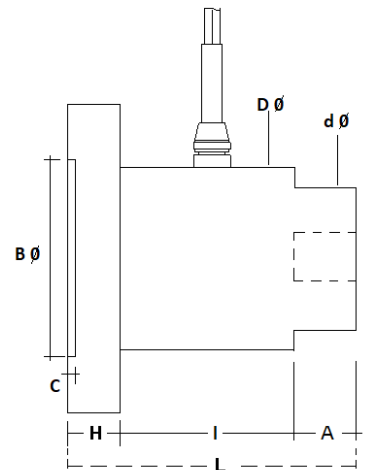
Electrical Termination



- + Input - Red
- + Output - Green
- Input -Black
- Output - White
- Shield - Floated

Options

- 4-20 mA / 0-2 Volt Output
- Digital Version with RS-485 interface / USB output
- Blue Tooth Or Wireless Telemetry
- Compatible Instrument
- Software for Graphic, Tabulation, Reporting And Analysis



Capacity-NM	A	B dia	C	d dia	D dia	E-Dia.	F X K PLCS.	G - PCD	H	I	L	SQ
10,20,50, 100	15	40	2.5	32	47	78	8.1 X 6	64	10	40	65	12.7(1/2")
200,300, 500	25	50	2.5	39	47	100	8.1 X 8	80	12	43	80	19.1(3/4")
1K, 1.5K	30	60	2.5	60	68	120	10.2 X 8	100	15	55	100	25.4(1")
2K, 3K 5K	40	70	2.5	90	98	150	12.7 X 8	125	20	90	150	38.1(1 1/2")-2K, 50.8(2")-3K,5K
10K	60	110	5.0	110	118	190	16.5 X 8	152	22	93	170	63.5(2 1/2")
20K, 30K	80	150	5.0	160	168	240	19.5 X 8	203	25	90	185	76.2(3")-20K, 88.9(3 1/2")-30K
50K	80	175	5.0	180	190	285	24.5 X 8	247	25	90	200	89.9(3 1/2")

Specifications are subject to change.

All dimensions are in mm.



Manufactured by:

ADI ARTECH
TRANSDUCERS PVT. LTD.
 (An ISO 9001:2015 Certified Company)

917/1, G.I.D.C. Estate, Makarpura, Vadodara - 390 010, Gujarat, INDIA

Mobile : +91-9374068998, 9879444551

Email : sales@adiartech.com, adiartech@adiartech.com

Website : www.adiartech.com