

Description

CE Certified TTD-SPSR Rotating Torque Transducer is general purpose dynamic torque sensor for accurate measurement of Torque in rotating shaft or equipment. It is constructed from SS 17-4 PH material with one end male square drive and other end flange. This is strain gage based sensor with full temperature compensation over 10~50°C. It is very accurate, reliable and sturdy for industrial applications. It is compensated for axial and bending forces for accurate torque measurements. It is available from 0 to 20NM to 0 to 20KNM ranges. Torque sensing shaft is installed in ball journals and electrical signals are transferred through high quality, low noise slip ring and brush mechanism. TTD is available with Male Square Drive Or Female Square Or Flange at both ends. It is available for speed up to 2000 RPM max. Customized version can be provided as per user's dimensions and capacity.

Features

- ❖ **CE Rated** ❖ Excellent selection of range from 0-10 to 0-20KNM.
- ❖ SS 17-4 PH construction for resistance against shock and overload.
- ❖ Environmentally protected for IP-65 Class.
- ❖ Can be customized to suit customer's requirements.
- ❖ Axial & Bending forces are compensated.

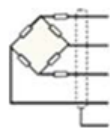
Applications

- ❖ Motor, Switches, Shaft & Axle torque measurement.
- ❖ To measure operating Torque of Industrial Valve & actuators.
- ❖ Automotive, Aerospace & offshore valves test rigs.
- ❖ Torque measurement of Industrial Fastener.

Performance Specification

Standard Capacities(NM)	See Table below
Excitation Voltage	10 VDC- Maximum 15 VDC
Nominal Output	2.0 m V/ V +/- 0.2
Non - Linearity	< ±0.1% Full Scale Output
Hysteresis	< ±0.1% FSO
Non-Repeatability	< ±0.1% FSO
Creep (30 minutes)	< ±0.3% FSO
Zero Balance	±1.0% FSO
Input Resistance	392 ± 15 Ohms
Output Resistance	350 ± 3 Ohms
Insulation Resistance	> 1000 Mega Ohms(50 VDC)
Cable Length	5 Meters
Safe Overload	150% FSO
Ultimate Overload	250% FSO
Temp. Compensated Range	0-50 °C
Temp. Effect on Output	< 0.05% FSO/ °C
Temperature Effect on Zero	< 0.05% FSO/ °C
Rotational Angular Deflection	< 0.4° at FSO
Finish & Construction	Stainless Steel 17-4 PH
Environmental Protection	IP 65 for gage area

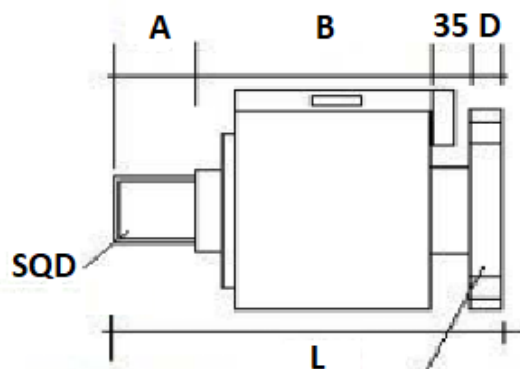
Electrical Termination



- + Input - Red
- + Output - Green
- Input -Black
- Output - White
- Shield - Floated

Options

- Compatible Instrument with 4-20 mA / 0-2 Volt Output
- Digital Version with RS-485 interface / USB output
- Blue Tooth Or Wireless Telemetry
- Software for Graphic, Tabulation, Reporting And Analysis



E Dia. flange with Knos. of thru holes Dia. F at G Pcd.

SQR	CAPACITY-NM	A	B	D	E - ø	F	K	G	L
12.7(1/2")	10,20,50,100	15	90	10	78	8.1	6	64	150
19.1(3/4")	200,300,500	25	88	12	100	8.1	8	80	160
25.4(1")	1K,1.5K	30	90	15	120	10.2	8	100	170
38.1(1 1/2")	2K,3K,5K	40	90	20	150	12.7	8	125	185
63.5(2 1/2")	10K	55	93	22	190	16.5	8	152	205
76.2(3")	20K,30K	70	120	25	240	19.1	8	203	250
88.9(3 1/2")	50K	80	130	30	285	25.4	8	247	275

Specifications are subject to change.

All dimensions are in mm.



Manufactured by:

ADI ARTECH
TRANSDUCERS PVT. LTD.
(An ISO 9001:2015 Certified Company)

917/1, G.I.D.C. Estate, Makarpura, Vadodara - 390 010, Gujarat, INDIA

Mobile : +91-9374068998, 9879444551

Email : sales@adiartech.com, adiartech@adiartech.com

Website : www.adiartech.com